



THINK PINK

THERE'S A

Rosé

FOR EVERYONE



Folio Offers a Dynamic Selection of Rosé to Meet a Variety of Consumer Preferences

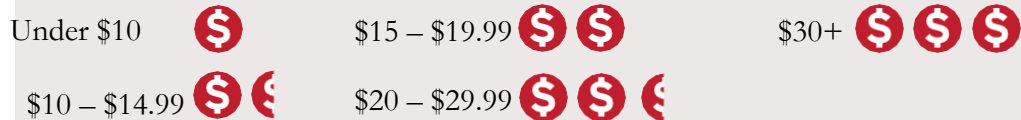
Still Rosé



Sparkling Rosé



Price Key



Body Key





Belleruche Rosé

AOP:

Côtes-du-Rhône

VARIETAL BLEND:

Grenache, Cinsault and Syrah



FOLIO
FINE WINE PARTNERS

IN THE SPOTLIGHT

There are a handful of iconic wine brands throughout the world that rise above the rest, but there is only one M. Chapoutier. Michel's never-ending quest is one of discovery, and the revelation of high-potential terroirs; how soils can express themselves, and how each one imparts unique and characterful qualities to each wine.

WINE PROFILE

The Belleruche Rosé displays itself in pale pink with bluish tints. Aromas of red fruits and citrus such as grapefruit are complemented by notes of exotic fruits. This rosé is fresh, delicate and fruity on entry and underpinned by a lovely freshness that prolongs the drinking enjoyment.

EXPLORE M. CHAPOUTIER

It is impossible to talk about the M. Chapoutier company without referring to 1808, the year it all began. With early beginnings in the Rue de l'Hermitage in Tain, Marius Chapoutier created the M. Chapoutier winery at the foot of the Hermitage hill in 1929. In 1990, Michel Chapoutier became head of the company and began to apply his belief in biodynamic cultivation. Seeking to discover and reflect the full potential of his terroirs and let the soils express their true character is that which gives the wines their signature style.

WHAT THEY'RE SAYING

M. Chapoutier wines offer an exceptional everyday option from the talented winemaker Michel Chapoutier. Michel says making affordable high-quality wines is one of the most difficult tasks. These wines offer an entry point into not only his portfolio, but also the celebrated appellation of Côtes-du-Rhône.

REFERENCE GUIDE



Mathilde Chapoutier
sélection



Provence Rosé

Orsuro

AOP:
Côtes de Provence

VARIETAL BLEND:
Grenache Noir, Cinsault, Cabernet
Sauvignon, Syrah and Rolle




FOLIO
FINE WINE PARTNERS

IN THE SPOTLIGHT

For Mathilde Chapoutier, wine is the fruit of pleasure. Through encounters and appellations, different soils reveal their secrets with their different characteristics. A journey, the idea of transmission, is meaningful. Wine is a permanent exploration, a never-ending journey.

WINE PROFILE

The Orsuro is a clear, pale pink with highlights of purple. The nose offers complex aromas of peach, citrus and exotic fruits. This palate is full and delicious on entry followed by notes of citrus, grapefruit and white-fleshed fruit, showing a subtle soft character complemented by a fine, acidity which adds structure.

EXPLORE MATHILDE CHAPOUTIER SELECTION

Mathilde Chapoutier explored various wine regions, in France and around the world, in order to create this selection of her favorites. The compass rose is the symbol. This figure symbolizes Mathilde's quest out of the Rhône Valley region and her travels throughout discoveries. Located at the foot of the Sainte-Victoire and Aurélien mountains in the commune of Pourcieux, the parcels have a wide array of exposures and terroirs creating complex wines. The name **Orsuro** is inspired by the North/North-East icy winds from the Sainte-Victoire mountains, called Orsuro in Marseille, in homage to the Great Bear.

WHAT THEY'RE SAYING

Mathilde Chapoutier Sélection inspires wine lovers to enjoy wine through Discovery, Simplicity and Conviviality. Leveraging her Rhône Valley heritage and winemaking know how, Mathilde Chapoutier Sélection Provence Rosé will be a benchmark and best-selling wine from the region.

REFERENCE GUIDE



Mathilde Chapoutier
W-sélection



Sainte-Victoire Rosé Aurisso

AOP:
Côtes de Provence Sainte-Victoire

VARIETAL BLEND:
Grenache Noir, Syrah, Cinsault and Rolle




FOLIO
FINE WINE PARTNERS

IN THE SPOTLIGHT

For Mathilde Chapoutier, wine is the fruit of pleasure. Through encounters and appellations, different soils reveal their secrets with their different characteristics. A journey, the idea of transmission, is meaningful. Wine is a permanent exploration, a never-ending journey.

WINE PROFILE

The Sainte-Victoire Rosé Aurisso is crystalline with reflections of pale pink. The nose is intense with complex aromas, nicely accentuated by floral notes. This palate is rich, long and velvety combined with a freshness which gives the wine an ethereal touch displaying very fine character.

EXPLORE MATHILDE CHAPOUTIER SELECTION

Mathilde Chapoutier explored various wine regions, in France and around the world, in order to create this selection of her favorites. The compass rose is the symbol. This figure symbolizes Mathilde's quest out of the Rhône Valley region and her travels throughout discoveries. The parcels for this wine are located to the east of Aix-en-Provence, at the foot of Aurélien and Sainte-Victoire mountains. Provence is known for its sunny climate. The rain in autumn and spring is followed by a hot, dry, windswept summer. The name **Aurisso** is from the Provençal language which means gusts of wind.

WHAT THEY'RE SAYING

Mathilde Chapoutier Selection inspires wine lovers to enjoy wine through Discovery, Simplicity and Conviviality. Leveraging her Rhône Valley heritage and winemaking know how, Mathilde Chapoutier Selection Provence Rosé will be a benchmark and best-selling wine from the region.

REFERENCE GUIDE





Rosé

REGION:
Salta, Argentina

VARIETAL BLEND:
Malbec and Torrontés



FOLIO
FINE WINE PARTNERS

IN THE SPOTLIGHT

In the local native language, Amalaya means “hope for a miracle,” an expression that captivated Donald Hess and inspired his first project in Argentina. That miracle was the discovery of water in the extreme high desert landscape of Argentina, which allowed for careful cultivation of vines on soil never sown before, not even by the Incas.

WINE PROFILE

The dry climate, significant daily temperature swings, and rocky, sandy soil together produce wines of unique style. With their intense fruity expression, crisp acidity, and freshness, their vibrancy echoes the splashes of color among the sandstone formations of the area, enlivening every occasion.

EXPLORE AMALAYA

The iconic Argentine varieties that blend into the wines of Amalaya are grown in Cafayate, the heart of the Calchaquí Valleys in northwestern Argentina. This wine region holds the distinction of comprising some of the highest-altitude vineyards in the world, sitting at elevation ranging from 1,700 up to 3,300 meters (5,570 to 10,825 feet).

WHAT THEY'RE SAYING

Very fresh, velvety and fruity. Medium body which preserves freshness and fruitiness. The final is fresh, elegant and the Torrontés floral notes stand out in a subtle way.

REFERENCE GUIDE





Rosa DOLCE&GABBANA

DOC:
Sicilia Rosato

VARIETAL BLEND:
Nerello Mascalese
and Nocera



FOLIO
FINE WINE PARTNERS

IN THE SPOTLIGHT

Dolce & Gabbana and Donnafugata strengthen their partnership by collaborating on a wine project together, with Rosa, an elegant rosé wine. Imbued with a distinctly Mediterranean personality, Rosa is the perfect ambassador for ‘Made in Italy’ excellence. Dolce & Gabbana and Donnafugata share deep roots in the most genuine traditions of their native land, Sicily. The colors, scents, flavors, music and atmosphere of the island are in fact sources of inspiration for both companies, which have always strived to make Sicilian culture known all over the world.

WINE PROFILE

A bright pale pink in color, it has an elegant bouquet of wisteria, with delicate fruity notes of wild strawberry, peach and bergamot. It has a very pleasant fragrance, minerality and persistence.

EXPLORE THE DONNAFUGATA COLLECTION

In 1983, the experienced winegrowing couple Giacomo and Gabriella Rallo decided to invest in a new Sicilian project that they called “Donnafugata.” Their vision was to create a contemporary winegrowing operation based around three sites in western Sicily and to produce a range of international and indigenous variety wines to showcase the potential of Sicily. Today, Donnafugata has expanded their growing areas to include the eastern side of Sicily with vineyards and wineries in Etna, 51 acres in production producing volcanic-origin wines, and in the most southern part of the island with 88 acres in Vittoria where Frappato is the star varietal.

WHAT THEY'RE SAYING

Dolce & Gabbana is regarded as one of the most luxurious brands in the world, and now with this limited-edition wine label complimented with beautiful gift box has made Donnafugata Rosa Dolce & Gabbana a sought-after wine. The inaugural 2019V sold out globally in less than two months, and the 2024V is anticipated to be as highly in demand.

REFERENCE GUIDE



SONOMA  EST. 1980

PIPER SONOMA.



Piper Sonoma Brut Rosé

APPELLATION:
Sonoma County

VARIETAL BLEND:
Chardonnay, Pinot Noir, Pinot
Blanc, Aged Reserve Blend



FOLIO
FINE WINE PARTNERS

IN THE SPOTLIGHT

Pale pink in color, the wine shows aromas of freshly picked cranberry, red fruit, tangerine, and guava. The palate bursts with red fruit and citrus, with a zippy acidity and a long finish.

WINE PROFILE

A bright pale pink in color, it has an elegant bouquet of jasmine with delicate fruity notes of wild strawberry, peach, and bergamot. It has a very pleasant fragrance, minerality, and persistence.

EXPLORE PIPER SONOMA

Piper Sonoma was founded in 1980 by the Marquis d'Aulan family, direct descendants of the Piper family. Recognizing Sonoma as a great growing region for Chardonnay and Pinot Noir, and believing in its terroir, the family's vision was to produce world-class sparkling wines in the New World, using old-world winemaking techniques. Nearly forty years later, the Piper Sonoma winemaking team continues to realize that vision and handcrafts premium sparkling wines under the guidance of long-time winemaker Keith Hock.

WHAT THEY'RE SAYING

"I'm honored to carry forward Piper Sonoma's 45-year legacy of crafting some of the finest sparkling wines in Sonoma County, working alongside our dedicated family growers whose longstanding farming relationships make it possible to create the very best sparkling wines year after year."

-- PETER KRAUTER, winemaker

REFERENCE GUIDE



CHARLES HEIDSIECK



Rosé Réserve

AOP:
Champagne AOC

VARIETAL BLEND:
Pinot Noir and Chardonnay



IN THE SPOTLIGHT

This cuvée is crafted from a precise selection of 40 crus and includes 25% reserve wines aged an average of five years. The blend consists of 40% Pinot Noir (including 5% red wines from Les Riceys), 35% Chardonnay, and 25% Meunier. Approximately 8 to 10% of the wines are vinified in old barrels, contributing to its complexity. The wine undergoes a slow and long maturation of 3 to 4 years, with a final dosage of 8 g/L, ensuring a balanced and refined profile.

WINE PROFILE

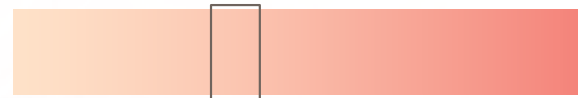
The wine is assertive and intense, offering vibrant aromas of fresh strawberry jam and vineyard peach. On the palate, it reveals warm, comforting notes of gingerbread and cinnamon, beautifully complemented by a smooth, velvety whipped cream texture that enhances its richness and depth.

EXPLORE CHARLES HEIDSIECK

An extraordinary individual who was well ahead of his time, Charles Heidsieck established a prestigious lineage. His charm and ambition helped define an enduring House style that is distinct and immediately recognizable amongst the competition. Today, the company continues to innovate and evolve, becoming one of the first Champagne houses to obtain B Corp Certification. The rigorous certification process illustrates Charles Heidsieck's commitment to improving its social and environmental impacts on the planet.

WHAT THEY'RE SAYING

The delicate powdery rose nuances reveal a flawless precise wine. Inspired by Brut Réserve, it is enhanced with great Champagne red wines that boost its generosity, freshness and its delicately fruity and elegant palate.



CHARLES HEIDSIECK



2018 Rosé Millésimé

AOP:
Champagne AOC

VARIETAL BLEND:
Pinot Noir and Chardonnay



IN THE SPOTLIGHT

The 2018 vintage was marked by challenging but ultimately rewarding conditions for Charles Heidsieck. Despite heavy rains and stormy spring weather, followed by a hot, dry summer, the vines were able to thrive. Maturity developed rapidly, and the grapes were healthy, with minimal rot and excellent sanitary conditions. The high yields allowed winemakers to replenish reserves after a difficult 2017, and the resulting wines were fresh, fruity, and elegant.

WINE PROFILE

The wine presents an elegant copper hue with generous floral and fruity aromas. On the nose, it reveals delicate notes of peony, rose, violet, and white musk, complemented by vibrant scents of blueberry, blackberry, raspberry, and pomegranate. The palate is bright and refreshing with hints of lemon and blood orange, followed by subtle undertones of tea and liquorice for a refined, lingering finish.

EXPLORE CHARLES HEIDSIECK

An extraordinary individual who was well ahead of his time, Charles Heidsieck established a prestigious lineage. His charm and ambition helped define an enduring House style that is distinct and immediately recognizable amongst the competition. Today, the company continues to innovate and evolve, becoming one of the first Champagne houses to obtain B Corp Certification. The rigorous certification process illustrates Charles Heidsieck's commitment to improving its social and environmental impacts on the planet.

WHAT THEY'RE SAYING

The year 2018 will be remembered for its extremes, with a challenging start balanced by a warm, dry summer that resulted in an exceptional harvest. This vintage now stands as a true testament to the resilience of the vineyards, earning its place among the remarkable years in Champagne.





MAISON FONDÉE EN 1785

PIPER-HEIDSIECK

CHAMPAGNE



Brut Rosé

AOP:

Champagne AOC

VARIETAL BLEND:

Pinot Noir, Chardonnay
and Meunier



FOLIO
FINE WINE PARTNERS

IN THE SPOTLIGHT

Piper-Heidsieck Brut Rosé is a vibrant and expressive blended rosé Champagne, crafted with 15% red wine primarily from the renowned Les Riceys plots. The grapes are hand-harvested at full maturity and sourced from vineyards certified in sustainable viticulture with High Environmental Value Level 3. A blend of Chardonnay, Pinot Noir, and Meunier, it offers intensity and freshness, with a perfect balance between vibrant fruit and elegance.

WINE PROFILE

Piper-Heidsieck Brut Rosé boasts a vibrant, fruity and intense profile. An aromatic explosion of blood orange, wild strawberries, black cherries and blackberry jam, followed by fragrances of roses and fresh almond.

EXPLORE PIPER HEIDSIECK

Since its founding in 1785, the House of Piper-Heidsieck has proven its innovative prowess in selecting and blending wines of exception. A quest for excellence and open-mindedness are reflected in the entire range of champagnes created by Chief Winemaker Emilien Boutillat and serve as a guarantee of the Piper-Heidsieck style. B Corp-certified since 2022, the House is committed to a fair and sustainable future.

WHAT THEY'RE SAYING

With its intense red fruit notes, Brut Rosé is the rosé for true epicureans. It can be enjoyed at any occasion.

REFERENCE GUIDE



Rare CHAMPAGNE



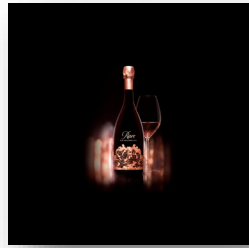
Rosé 2014 Millésime

AOP:

Champagne AOC

VARIETAL BLEND:

60% Chardonnay
40% Pinot Noir



FOLIO
FINE WINE PARTNERS

IN THE SPOTLIGHT

The extra-ordinary Rare Rosé Millésime 2014 is the fourth rosé vintage of the house. The wine is aged on lees for a minimum of 8 years, is a blend of 60% Chardonnay and 40% Pinot Noir and is produced from grapes that hail from 9 crus. Five of the crus are classified as Grand Crus and two are classified as Premier Crus: Chardonnay (Villers-Marmery, Vertus, Montgueux, Avize, Oger) – Pinot Noir (Ay, Ambonnay, Verzy).

WINE PROFILE

Coppery rose gold in color, Rare Rosé Millésime sweeps you up in a whirlwind of complex aromas of wild strawberry, black cherry, black berry, blood orange, violet and rose. The palate is expressive with concentrated notes of pomegranate, Morello cherry, dried flowers and strawberry tart. Complemented by a wonderfully long, velvety finish.

EXPLORE RARE CHAMPAGNE

Rare Champagne's noble origins date back to May 6, 1785, when Florens-Louis Heidsieck met Queen Marie Antoinette for the first time, after which he wrote "I wanted a cuvée worthy of a queen!" The legend was born 200 years later with the unveiling of the very first Rare Champagne Millésime, Rare Millésime 1976, presented at the Château de Versailles in 1985. Only 13 vintages have been unveiled since the first vintage, all in limited series.

Today, Rare Champagne is still not only committed to crafting exceptional wines but has also made a commitment to the environment by becoming B Corp Certified, one of the most demanding certifications that evaluates a brand's social and environmental impact.

WHAT THEY'RE SAYING

"Bursts with vibrant energy as soon as this hits the palate, yet is refined and elegant throughout -- akin to a prima ballerina's marriage of stored power and grace. Reveals a lovely range of strawberry coulis, blood orange granita, raw almond, honeycomb, smoke and chalk notes framed by chiseled acidity and carried on the vivacious, finely detailed mousse." -Alison Napjus, Wine Spectator

REFERENCE GUIDE





FOLIO

FINE WINE PARTNERS

